

Wartungsfreie Radialgelenklager für Stahlwasserbau

Radial spherical plain bearings, maintenance-free, for civil engineering

GE ... HS

d = 100 ... 1000 mm

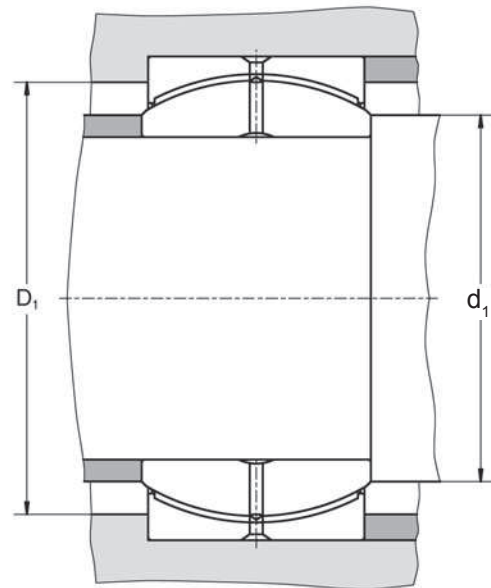
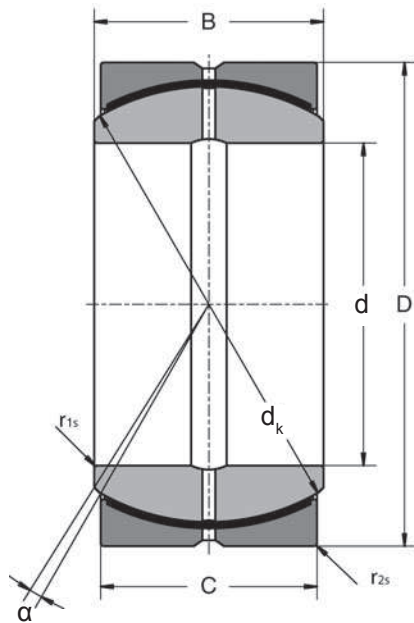
Abmessungen:
nach DIN ISO 12240-1, Maßreihe H (Tabelle 5)

Dimensions:
as per DIN ISO 12240-1, dimension series H (table 5)



Nach Initialschmierung wartungsfrei
After initial lubrication maintenance-free

Typ Type	d mm	D	B	C	d _k	Tragzahlen/Load ratings	
						statisch static C ₀ kN	dynamisch dynamic C kN
GE 100 HS	100 ^{-0,020}	150 ^{-0,018}	71 ^{-0,20}	67 ^{-0,20}	135	750	600
GE 110 HS	110 ^{-0,020}	160 ^{-0,025}	78 ^{-0,20}	74 ^{-0,25}	145	880	720
GE 120 HS	120 ^{-0,020}	180 ^{-0,025}	85 ^{-0,20}	80 ^{-0,25}	160	1080	865
GE 140 HS	140 ^{-0,025}	210 ^{-0,030}	100 ^{-0,25}	95 ^{-0,25}	185	1530	1220
GE 160 HS	160 ^{-0,025}	230 ^{-0,030}	115 ^{-0,25}	109 ^{-0,30}	210	2000	1600
GE 180 HS	180 ^{-0,025}	260 ^{-0,035}	128 ^{-0,25}	122 ^{-0,35}	240	2600	2080
GE 200 HS	200 ^{-0,030}	290 ^{-0,035}	140 ^{-0,30}	134 ^{-0,35}	260	3100	2450
GE 220 HS	220 ^{-0,030}	320 ^{-0,040}	155 ^{-0,35}	148 ^{-0,40}	290	3800	3050
GE 240 HS	240 ^{-0,030}	340 ^{-0,040}	170 ^{-0,40}	162 ^{-0,45}	310	4500	3600
GE 260 HS	260 ^{-0,035}	370 ^{-0,040}	185 ^{-0,40}	175 ^{-0,45}	340	5300	4250
GE 280 HS	280 ^{-0,035}	400 ^{-0,040}	200 ^{-0,45}	190 ^{-0,45}	370	6300	5000
GE 300 HS	300 ^{-0,035}	430 ^{-0,045}	212 ^{-0,45}	200 ^{-0,45}	390	6950	5600
GE 320 HS	320 ^{-0,040}	460 ^{-0,045}	230 ^{-0,45}	218 ^{-0,50}	414	8000	6400
GE 340 HS	340 ^{-0,040}	480 ^{-0,045}	243 ^{-0,50}	230 ^{-0,50}	434	8900	7100
GE 360 HS	360 ^{-0,040}	520 ^{-0,050}	258 ^{-0,50}	243 ^{-0,50}	474	10250	8150
GE 380 HS	380 ^{-0,040}	540 ^{-0,050}	272 ^{-0,50}	258 ^{-0,50}	494	11300	9150
GE 400 HS	400 ^{-0,040}	580 ^{-0,050}	280 ^{-0,50}	265 ^{-0,75}	514	12000	9650
GE 420 HS	420 ^{-0,045}	600 ^{-0,050}	300 ^{-0,50}	280 ^{-0,75}	534	13300	10600
GE 440 HS	440 ^{-0,045}	630 ^{-0,075}	315 ^{-0,75}	300 ^{-0,75}	574	15300	12200
GE 460 HS	460 ^{-0,045}	650 ^{-0,075}	325 ^{-0,75}	308 ^{-1,00}	593	16250	12900
GE 480 HS	480 ^{-0,045}	680 ^{-0,075}	340 ^{-0,75}	320 ^{-1,00}	623	17700	14300



Typ Type	α °	r_{1s} mm	r_{2s} mm	d_{1min}	d_{1max}	D_{1min}	D_{1max}	Masse Mass kg	Artikelnr. Item no.
GE 100 HS	2	1,0	1,0	107,5	114,5	124,5	143,5	4,5	055 360
GE 110 HS	2	1,0	1,0	117,5	122,0	132,0	153,5	5,4	055 361
GE 120 HS	2	1,0	1,0	128,0	135,5	146,0	173,0	8,0	055 362
GE 140 HS	2	1,0	1,0	149,0	155,5	166,5	202,5	13,0	055 363
GE 160 HS	2	1,0	1,0	169,5	175,5	187,5	222,0	16,6	055 364
GE 180 HS	2	1,1	1,1	191,5	203,0	214,5	250,0	24,4	055 365
GE 200 HS	2	1,1	1,1	212,0	219,0	232,0	279,5	33,5	055 366
GE 220 HS	2	1,1	1,1	233,0	245,0	259,0	309,0	45,8	055 367
GE 240 HS	2	1,1	1,1	253,5	259,0	274,0	328,5	53,7	055 368
GE 260 HS	2	1,1	1,1	274,5	285,0	302,0	358,0	69,5	055 369
GE 280 HS	2	1,1	1,1	295,5	311,0	328,0	387,5	89,5	055 370
GE 300 HS	2	1,1	1,1	315,5	327,0	346,0	417,0	110,0	055 371
GE 320 HS	2	1,1	3,0	341,0	351,0	363,0	431,0	135,0	055 372
GE 340 HS	2	1,1	3,0	358,0	366,0	379,0	449,0	150,0	055 373
GE 360 HS	2	1,1	4,0	389,0	404,0	419,0	485,0	200,0	055 374
GE 380 HS	2	1,5	4,0	406,0	419,0	433,0	503,0	220,0	055 375
GE 400 HS	2	1,5	4,0	426,0	438,0	452,0	544,0	275,0	055 376
GE 420 HS	2	1,5	4,0	440,0	449,0	467,0	562,0	300,0	055 377
GE 440 HS	2	1,5	4,0	471,0	487,0	501,0	589,0	360,0	055 378
GE 460 HS	2	1,5	5,0	489,0	504,0	521,0	612,0	380,0	055 379
GE 480 HS	2	2,0	5,0	514,0	530,0	549,0	635,0	435,0	055 380

Wartungsfreie Radialgelenklager für Stahlwasserbau

Radial spherical plain bearings, maintenance-free, for civil engineering

GE ... HS

d = 100 ... 1000 mm

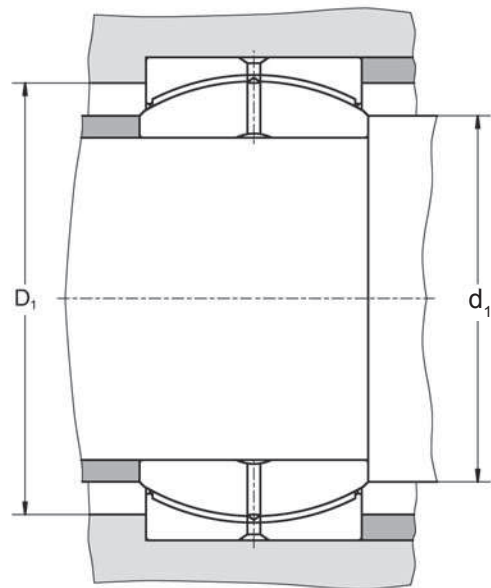
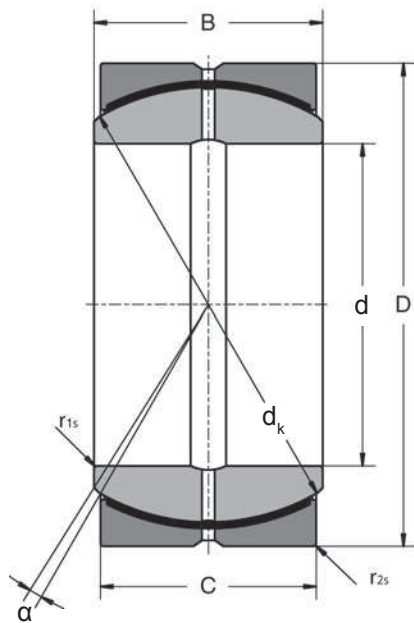
Abmessungen:
nach DIN ISO 12240-1, Maßreihe H (Tabelle 5)

Dimensions:
as per DIN ISO 12240-1, dimension series H (table 5)



Nach Initialschmierung wartungsfrei
After initial lubrication maintenance-free

Typ Type	d mm	D	B	C	d _k	Tragzahlen/Load ratings	
						statisch static C ₀ kN	dynamisch dynamic C kN
GE 500 HS	500 ^{-0,045}	710 ^{-0,075}	355 ^{-0,75}	335 ^{-1,00}	643	19000	15300
GE 530 HS	530 ^{-0,050}	750 ^{-0,075}	375 ^{-1,00}	355 ^{-1,00}	673	21300	17000
GE 560 HS	560 ^{-0,050}	800 ^{-0,075}	400 ^{-1,00}	380 ^{-1,25}	723	24500	19600
GE 600 HS	600 ^{-0,050}	850 ^{-0,100}	425 ^{-1,00}	400 ^{-1,25}	773	27500	22000
GE 630 HS	630 ^{-0,050}	900 ^{-0,100}	450 ^{-1,25}	425 ^{-1,25}	813	30750	24500
GE 670 HS	670 ^{-0,075}	950 ^{-0,100}	475 ^{-1,25}	450 ^{-1,25}	862	34500	27500
GE 710 HS	710 ^{-0,075}	1000 ^{-0,100}	500 ^{-1,25}	475 ^{-1,25}	912	38500	31000
GE 750 HS	750 ^{-0,075}	1060 ^{-0,125}	530 ^{-1,25}	500 ^{-1,50}	972	43250	34500
GE 800 HS	800 ^{-0,075}	1120 ^{-0,125}	565 ^{-1,25}	530 ^{-1,50}	1022	48200	39000
GE 850 HS	850 ^{-0,100}	1220 ^{-0,125}	600 ^{-1,50}	565 ^{-1,50}	1112	56000	45000
GE 900 HS	900 ^{-0,100}	1250 ^{-0,125}	635 ^{-1,50}	600 ^{-1,50}	1142	61000	49000
GE 950 HS	950 ^{-0,100}	1360 ^{-0,160}	670 ^{-1,50}	635 ^{-1,50}	1242	70200	56000
GE 1000 HS	1000 ^{-0,100}	1450 ^{-0,160}	710 ^{-1,50}	670 ^{-1,50}	1312	78250	63000



Typ Type	α °	r_{1s} mm	r_{2s} mm	d_{1min} mm	d_{1max} mm	D_{1min} mm	D_{1max} mm	Masse Mass kg	Artikelnr. Item no.
GE 500 HS	2	2,0	5,0	531	544	563	664	500	055 381
GE 530 HS	2	2,0	5,0	556	567	586	707	585	055 382
GE 560 HS	2	2,0	5,0	594	610	629	749	730	055 383
GE 600 HS	2	2,0	6,0	636	654	678	794	860	055 384
GE 630 HS	2	3,0	6,0	668	685	709	841	1040	055 385
GE 670 HS	2	3,0	6,0	710	728	752	888	1210	055 386
GE 710 HS	2	3,0	6,0	752	772	796	936	1400	055 387
GE 750 HS	2	3,0	6,0	799	824	851	994	1670	055 388
GE 800 HS	2	3,0	6,0	841	861	891	1051	1940	055 389
GE 850 HS	2	3,0	7,5	912	945	977	1143	2600	055 390
GE 900 HS	2	3,0	7,5	940	958	991	1171	2690	055 391
GE 950 HS	2	4,0	7,5	1019	1055	1087	1279	3620	055 392
GE 1000 HS	2	4,0	7,5	1058	1112	1147	1367	4470	055 393